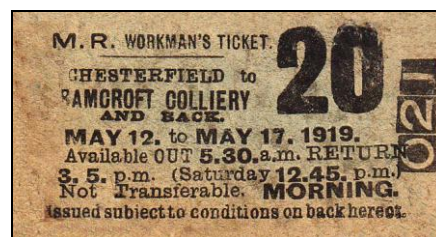
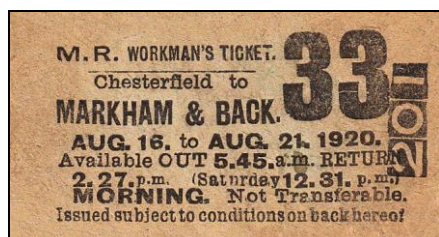
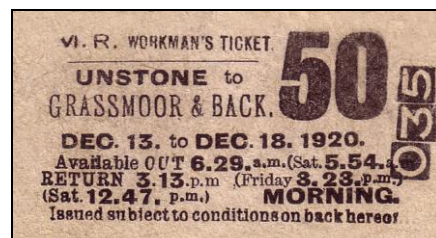
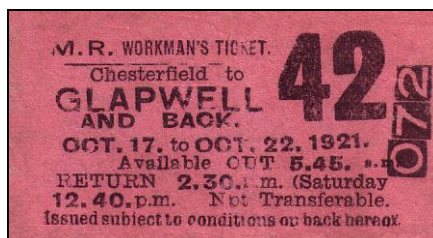
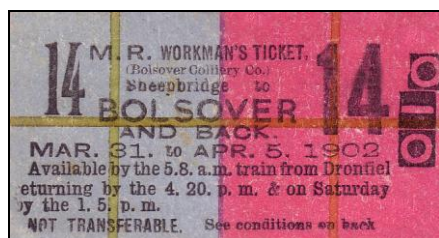


CHESTERFIELD AREA WORKMEN'S TICKETS ISSUED TO DIFFERENT DESTINATIONS

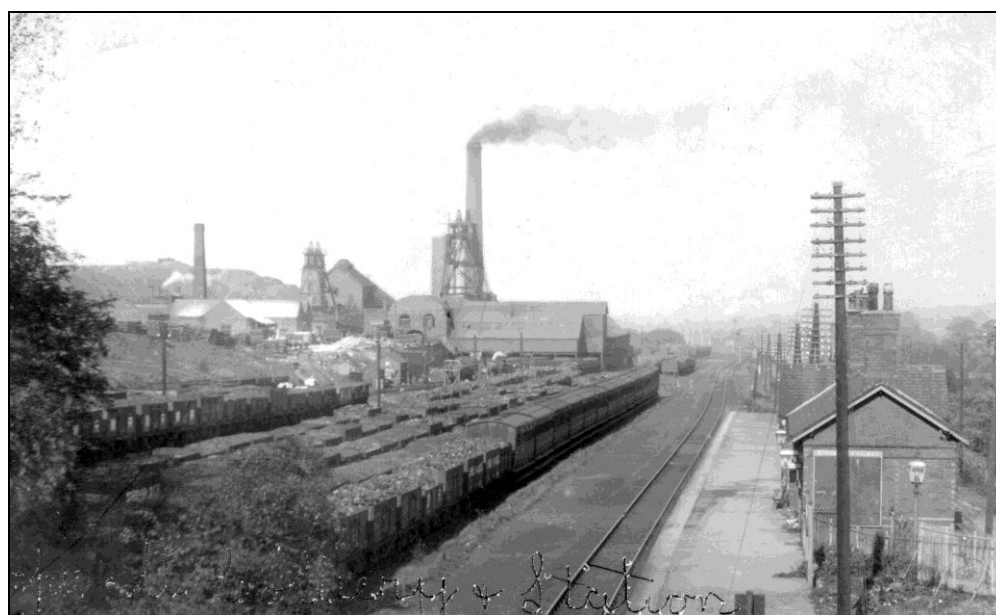
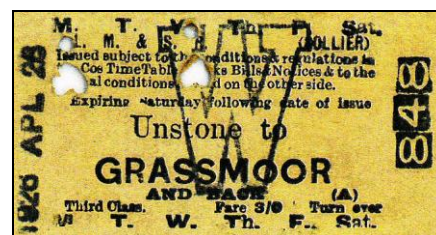


Origins of known tickets:

Chesterfield Sheepbridge (& WM) Unstone Whittington

The large numbers on the tickets corresponded with the specific weeks of the year. New ticket stocks were printed every week – the numbers were an easy way of checking that a person was not using an out of date ticket.

Towards the end of the workmen's services there were insufficient passengers from some stations to justify printing new stocks every week. Instead weekly "station to station" tickets were produced which had to be clipped daily.



Miners' trains were rarely photographed in motion, partly due to starting so early in the morning.

This photo shows a set of 13 small carriages from one of the trains stabled opposite the platform at Glapwell station.

